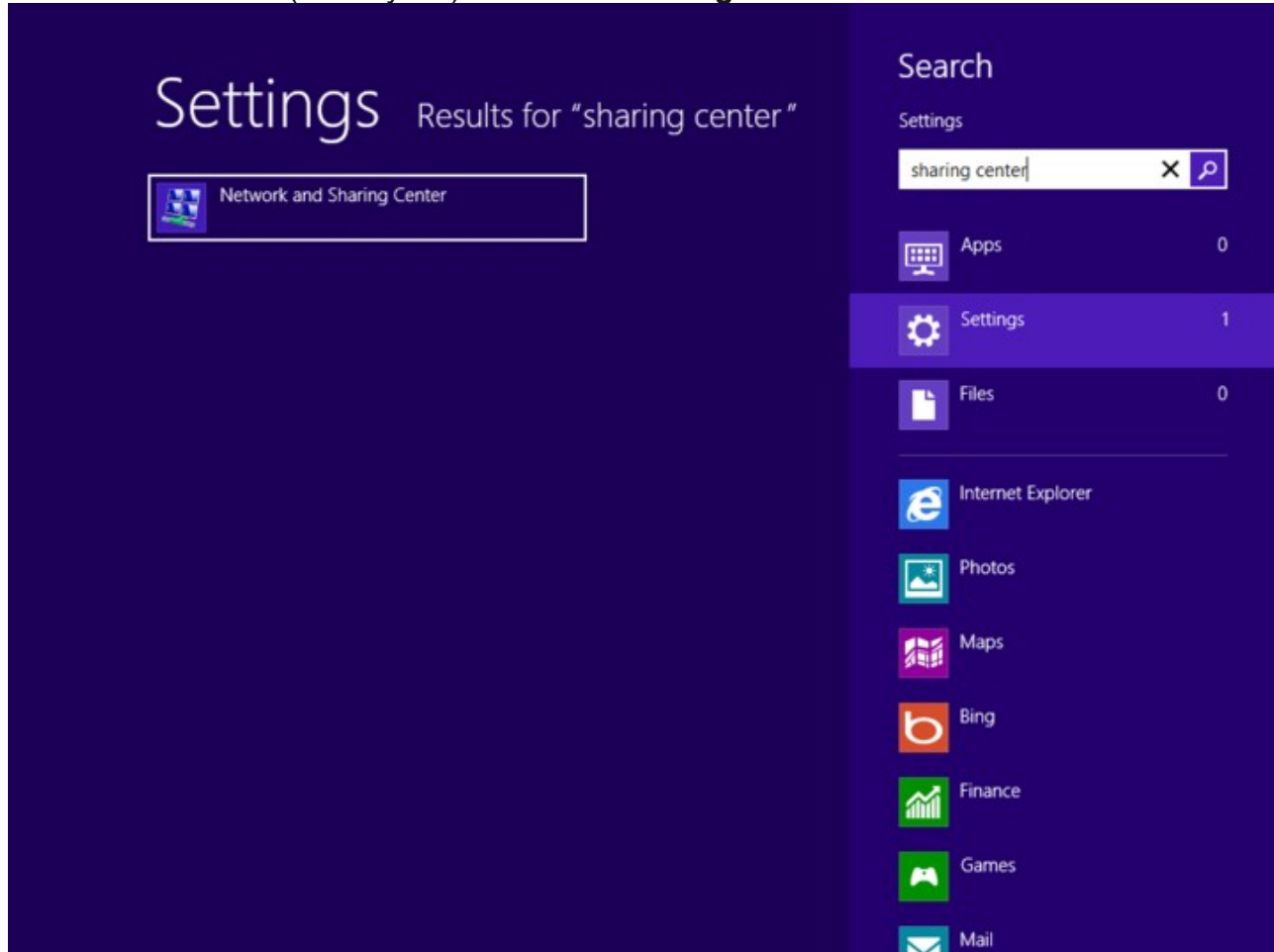
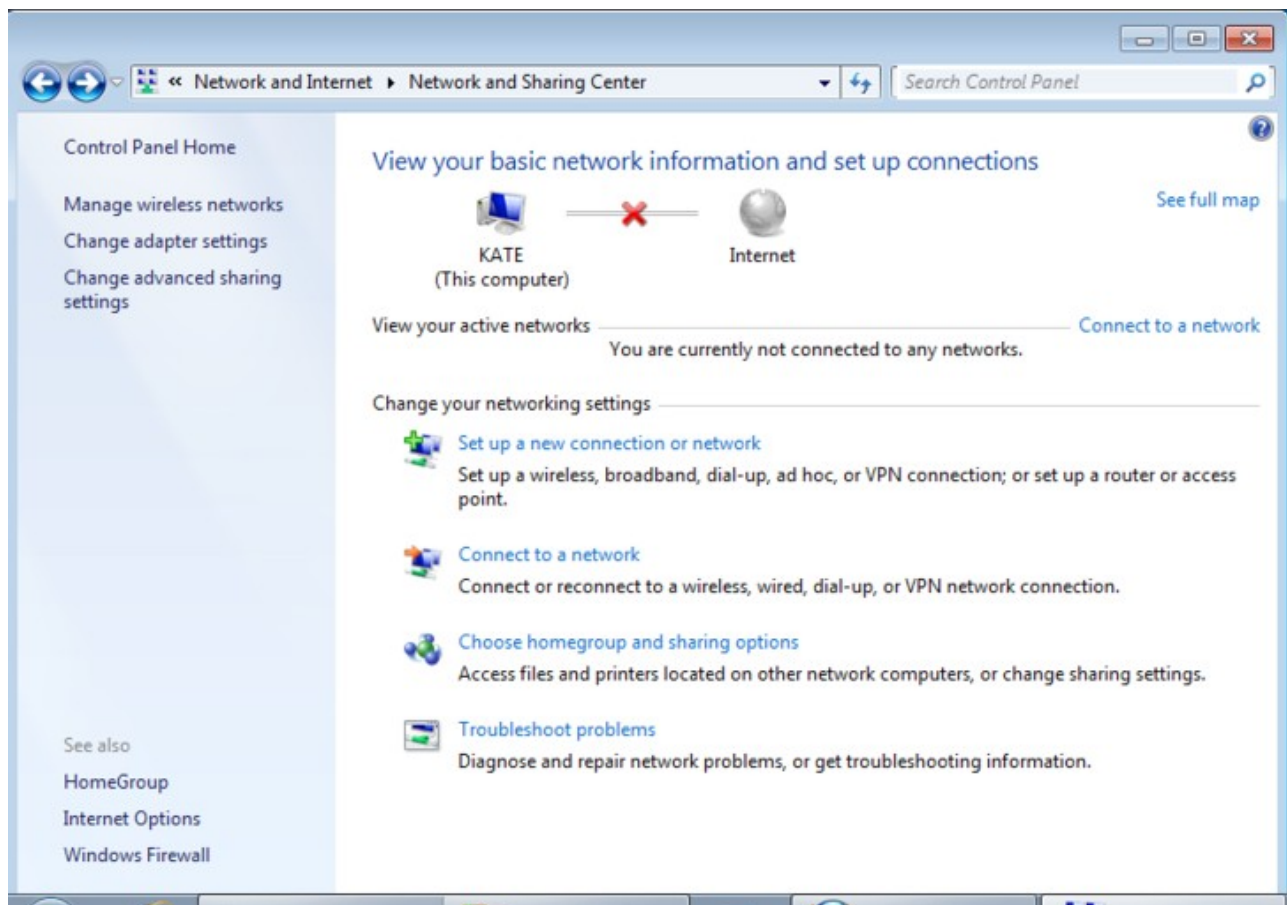


Configuring eduroam – Windows 7

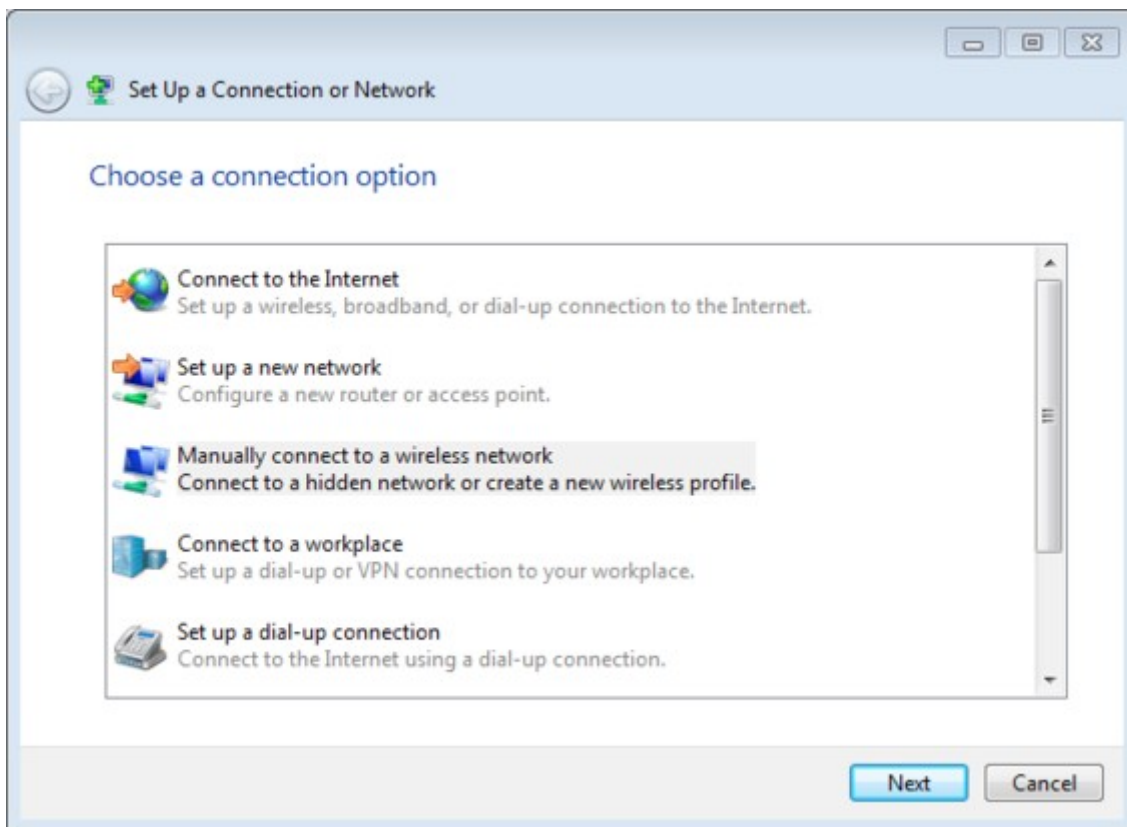
1. From the **Control Panel** open the **Network and Sharing Center** or, from the **Settings Search Panel** (Winkey+W) search for **sharing center**



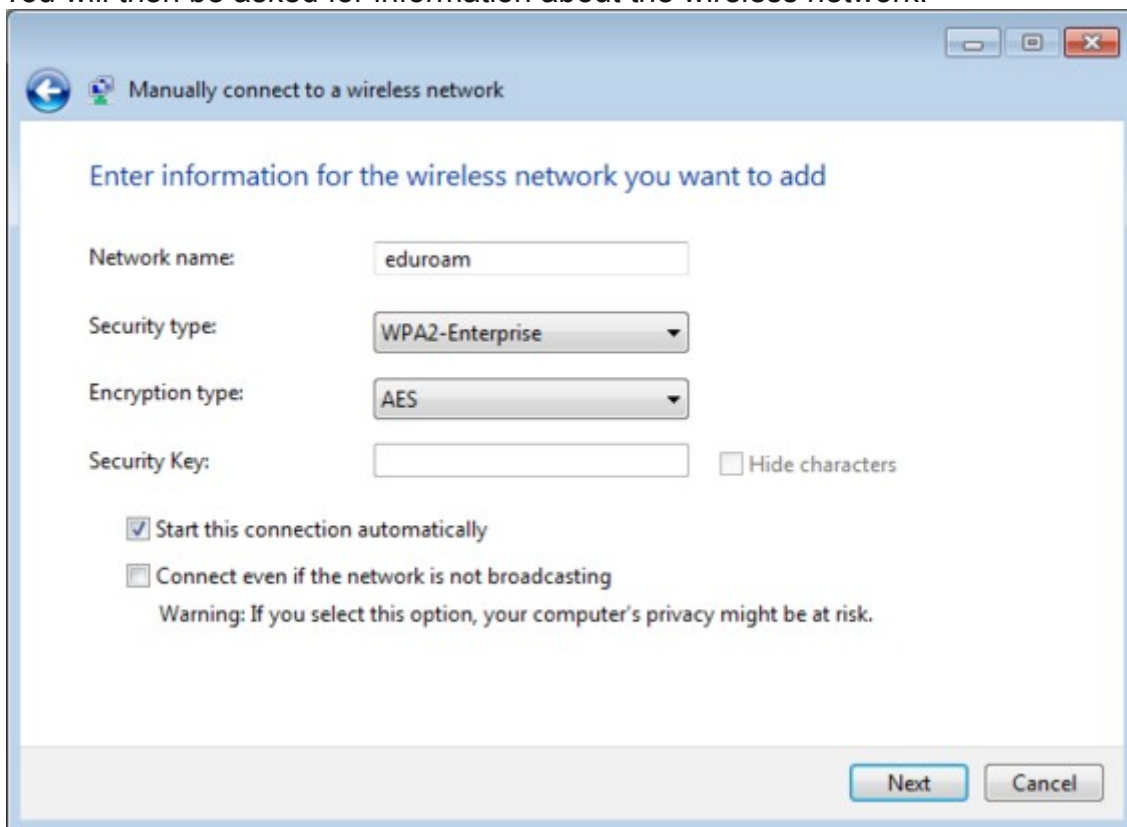
2. From the list of tasks select **Setup a new connection or network**.



3. When asked to choose a new connection option select **Manually connect to a wireless network**



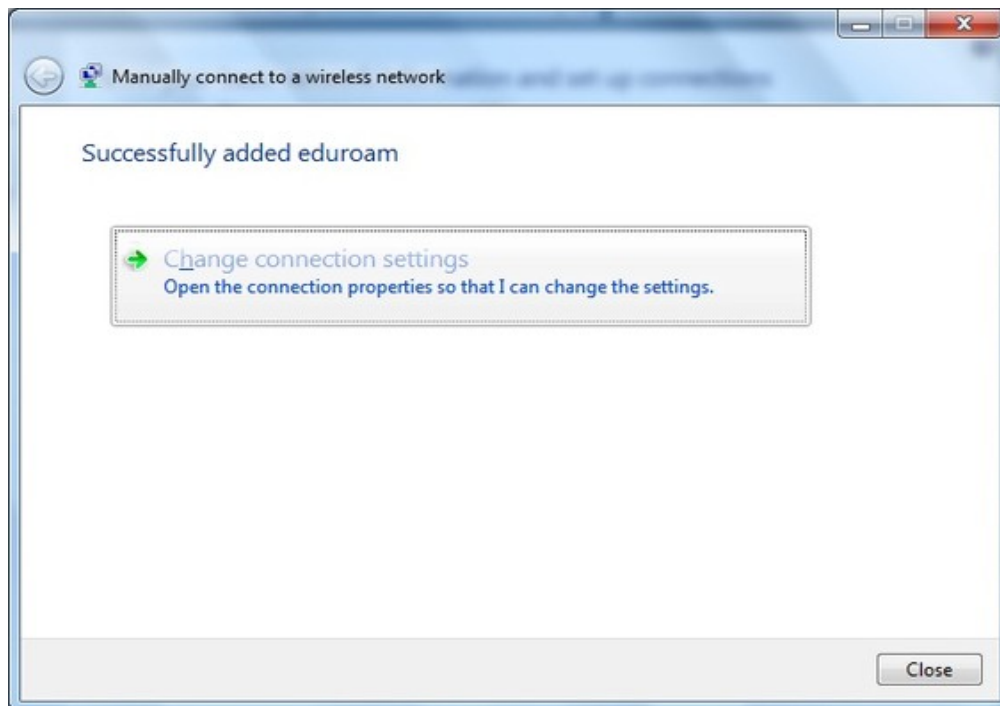
4. You will then be asked for information about the wireless network.



In the **Network name** box, type *eduroam* (note the lower-case 'e').

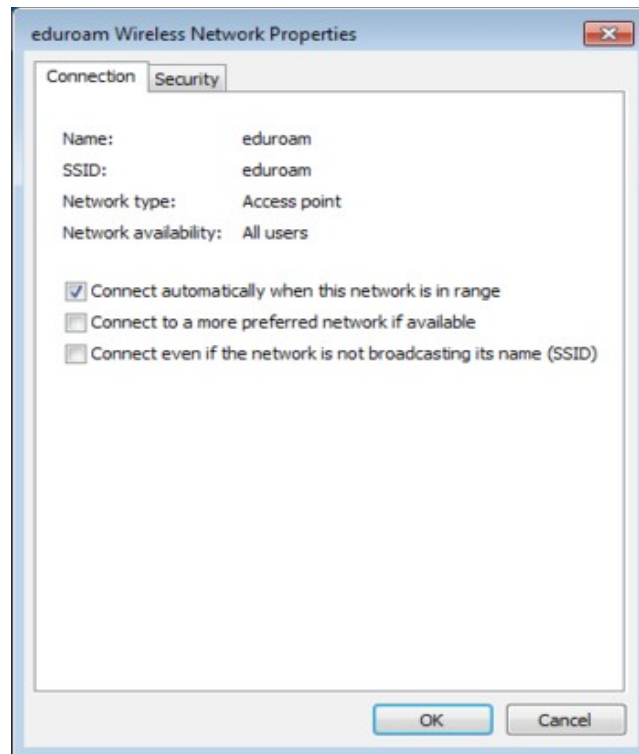
- From the drop-down lists:
 - For **Security type** choose *WPA2-Enterprise* (or *WPA-Enterprise* if your wireless card doesn't support WPA2)
 - For **Encryption type** choose *AES* (or *TKIP* if your wireless card doesn't support AES)

Select **Next**. You should now be told that eduroam has been successfully added. Select **Change connection settings**.

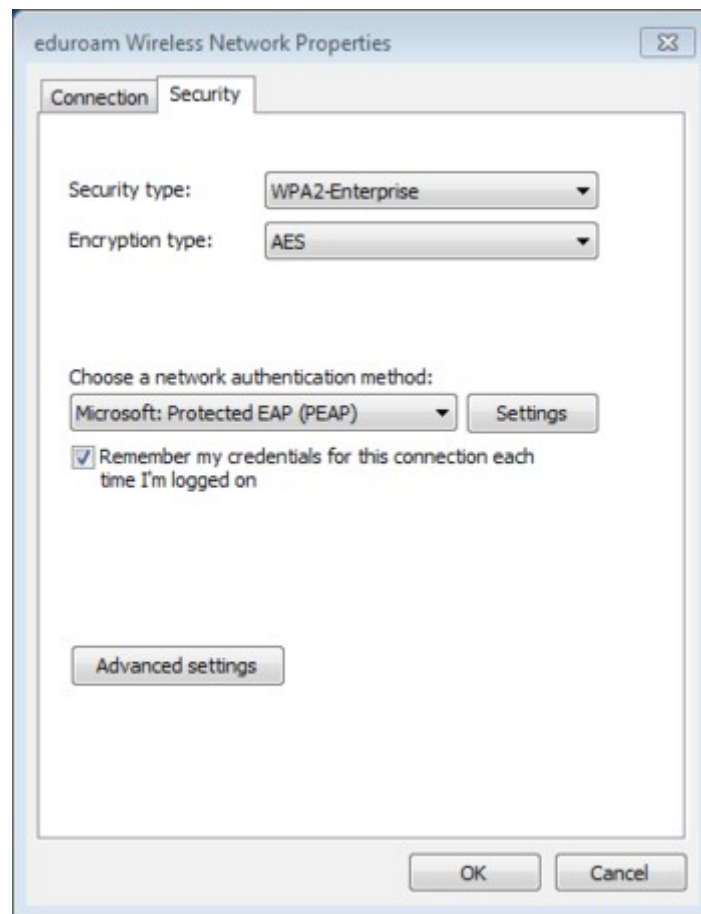


This will bring up the network wireless connection properties.

5. On the **Connection tab** uncheck **Connect to a more preferred network** if available. The result should look like:-



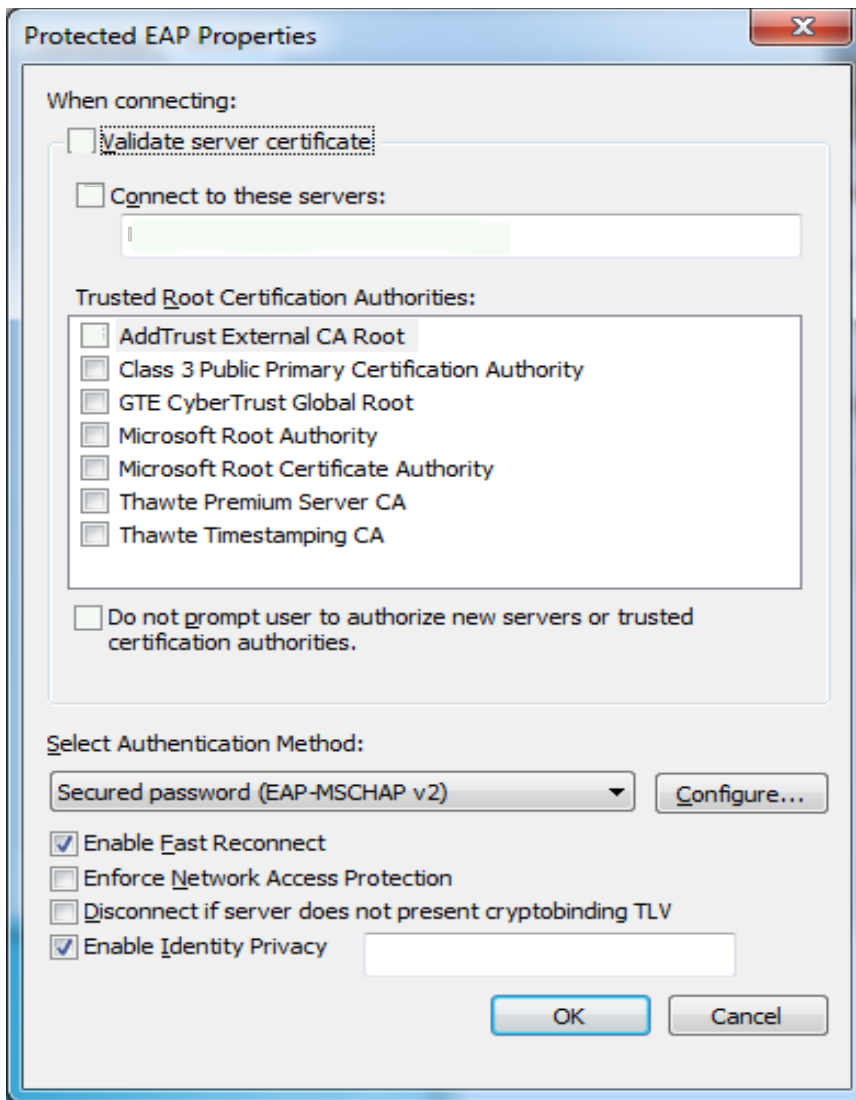
6. Select the **Security** tab.



- From the drop-down list for **Choose a network authentication method** choose **Protected EAP (PEAP)**

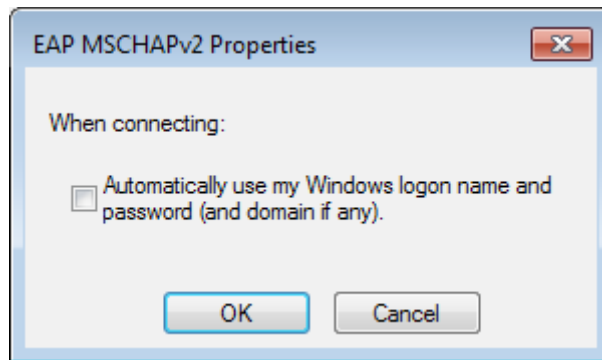
- Select **Settings...**

7. Complete the settings in this dialogue box as shown:

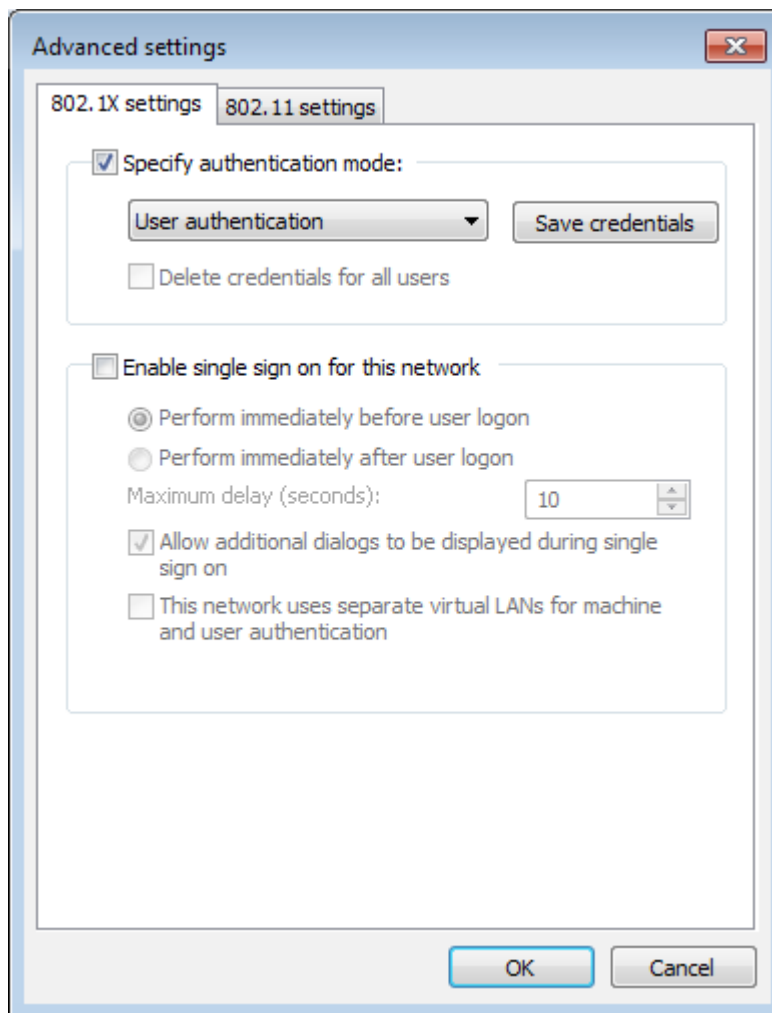


Make sure **Validate server certificate** is not ticked.

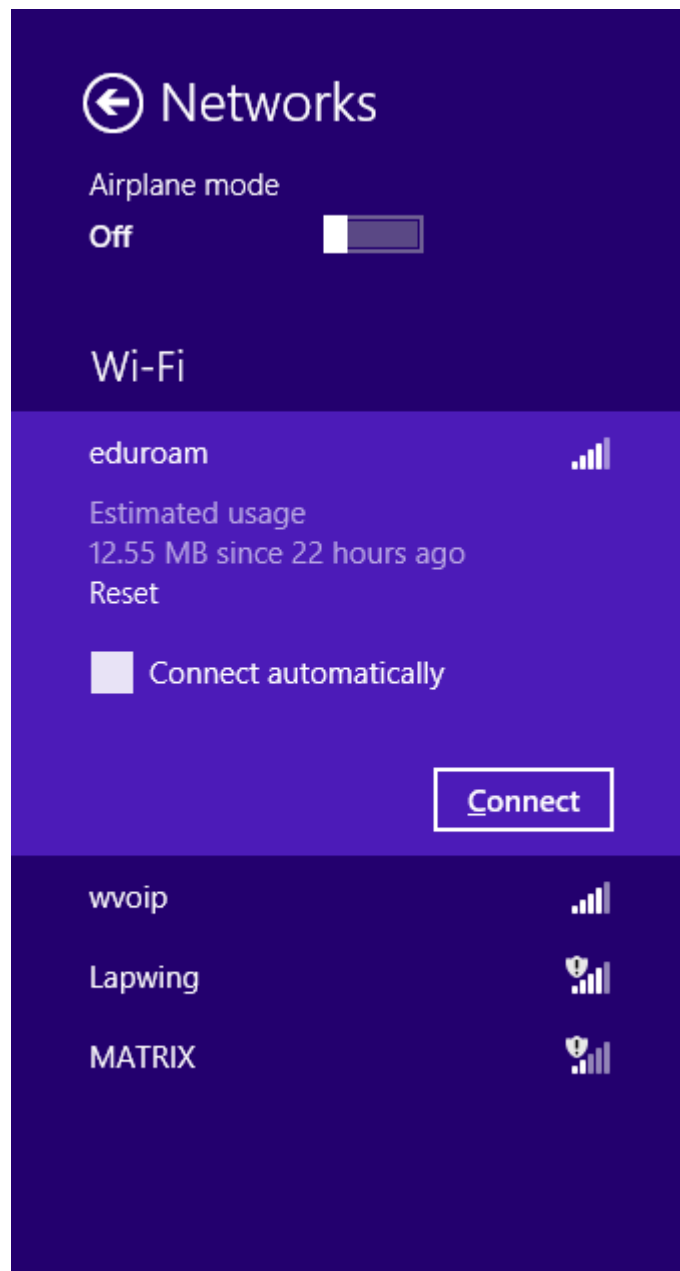
8. The drop-down list under **Select Authentication Method** should already have **Secured password (EAP-MSCHAP v2)** selected - select the **Configure...** button next to it to open the *EAP MSCHAPv2 Properties* dialogue box:



9. Untick the box next to **Automatically use my Windows logon name and password (and domain if any)** then select **OK**, then select **OK** to close the *Protected EAP Properties* dialogue box
10. Now, from the *Security* tab select **Advanced settings**.

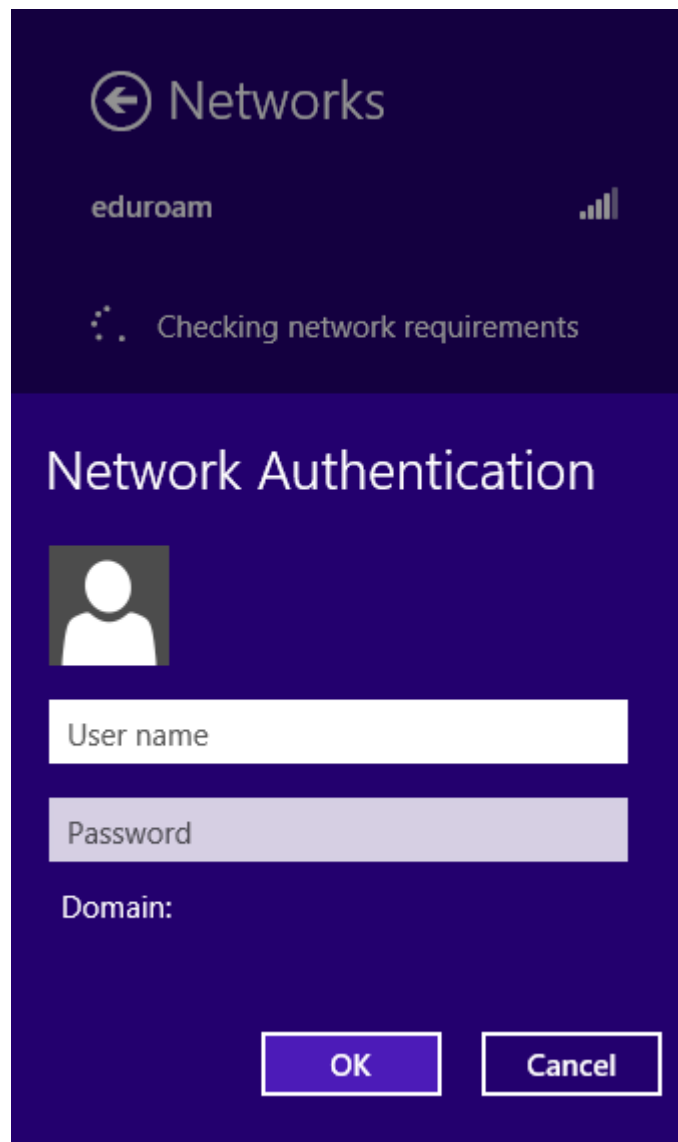


11. Check that you have the **802.1X** settings tab and, from the pull-down menu select **User authentication** then select **OK**
12. Now Select the **802.11** settings tab. Check that **Enable Pairwise Master Key (PMK) caching** is **not** ticked.
13. Select **OK** to close all the various dialogue boxes
14. Select **Close** to close the "Manually connect to a wireless network" box.
15. Use **Win+C** and **Settings** to find the wireless settings icon. Click on the icon and you should see **eduroam** listed as a wireless network
16. Check the **Connect automatically** box next to **eduroam** and then click on **Connect**



17. After a short period of time your computer should tell you **Checking network requirements** and then display a dialogue box prompting for your credentials.

18. Complete the dialogue box using the *Network Authentication* credentials given to you by the ICT helpdesk



Your User name will be the eduroam identifier shown (typically your name or registration number followed by @institution.ac.ke where institution.ac.ke is your University domain eg ku.ac.ke for Kenyatta University).

Your Password will be the password provided by the ICT helpdesk.

19. Select **OK**.

All the settings you have made are stored in your computer and should not need re-entering each time you connect.